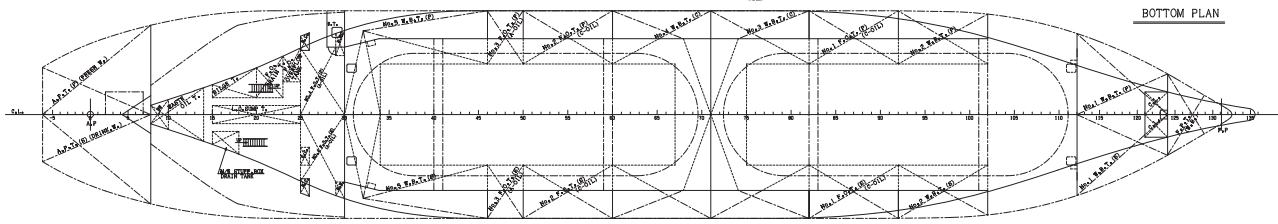
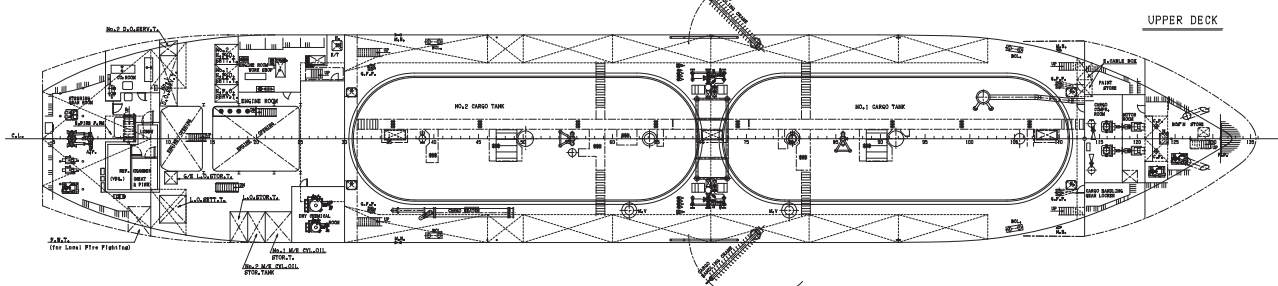
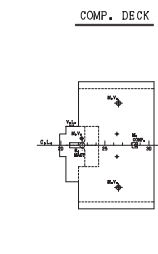
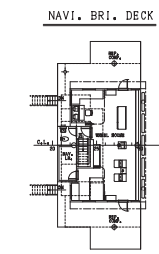
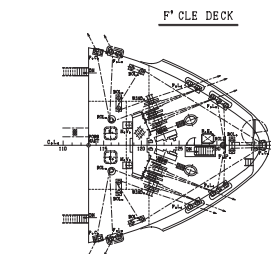
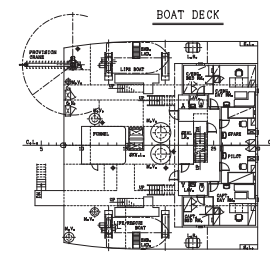
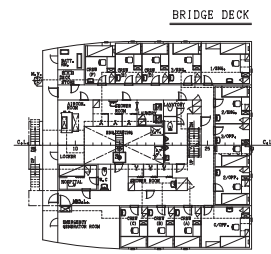
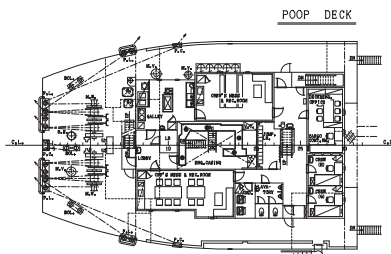
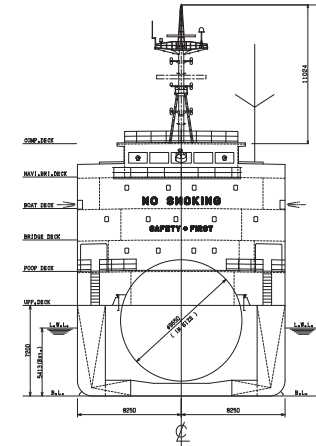
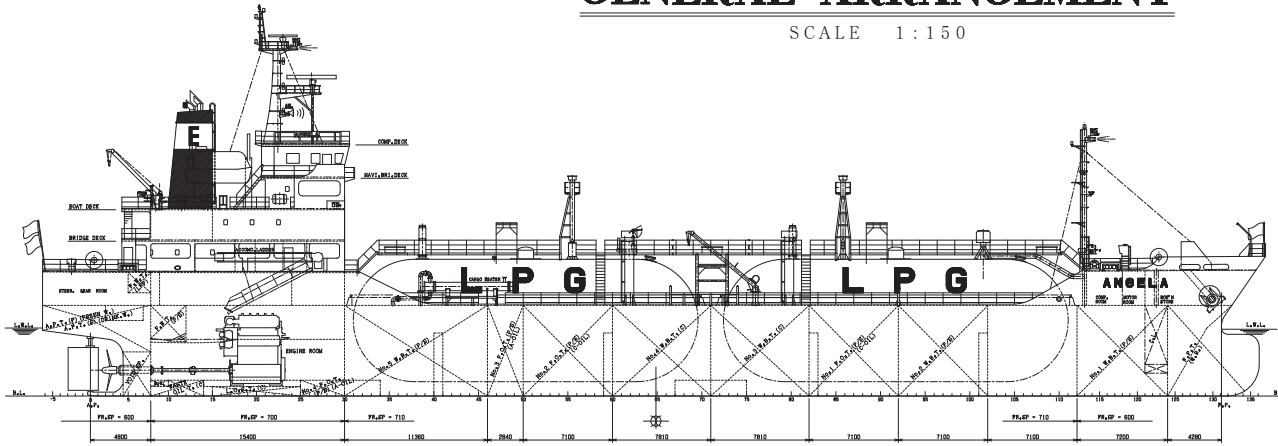


"M.V. ANGELA"

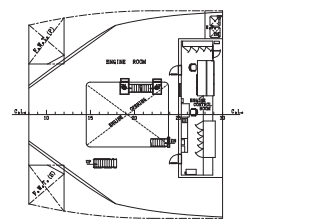
GENERAL ARRANGEMENT

SCALE 1:150



PRINCIPAL DIMENSIONS

LENGTH (O.A.)	97.036 m
LENGTH (P.P.)	89.90 m
BREADTH (MID.)	16.50 m
DEPTH (MID.)	7.20 m
PULL LOAD DRAWT (DISBURS. SECT.)	5,413 m
GROSS TONNAGE (INTERNATIONAL)	3,692 T
DEADWEIGHT (SUMMER)	3,999.41 t
TANK CAPACITY	39,400.53 m ³
MAIN ENGINE	MAKITA-MITSUBI-MAN BSW 5L35MC-MARK6 X 1
M.C.O.	2700kW x 2100rpm
C.S.O. (900M, C.O.)	2450kW x 2000rpm
SERVICE SPEED (900M, C.O., 10SE.M.)	451.13-2.1 Kts
COMPLEMENT	18 P
CLASSIFICATION	
REG. NO. (Licensed Gas Carrier Type 2P2). (IMBSE IND.)	
Descriptive Note: (Design ambient pressure 1.72MPa / minimum temperature -10 degree C)	
NAVIGATION AREA	OCEAN GOING



BIBLIOGRAPHY

7th November 2009
for FINISHED PLAN

OWNER	SHIP NO.	DRAWING NO.	CLASS
ADM. MANAGER	1080	B-110	N K
SHIP	3,500 CBM, PRESSURIZED LPG/VCM CARRIER		
ADM. SHIP	GENERAL ARRANGEMENT		
SHIPYARD	FINISHED PLAN		
DRAWN			
DATE	7th November '09	SCALE 1:150	

YAMAMOTO CORPORATION