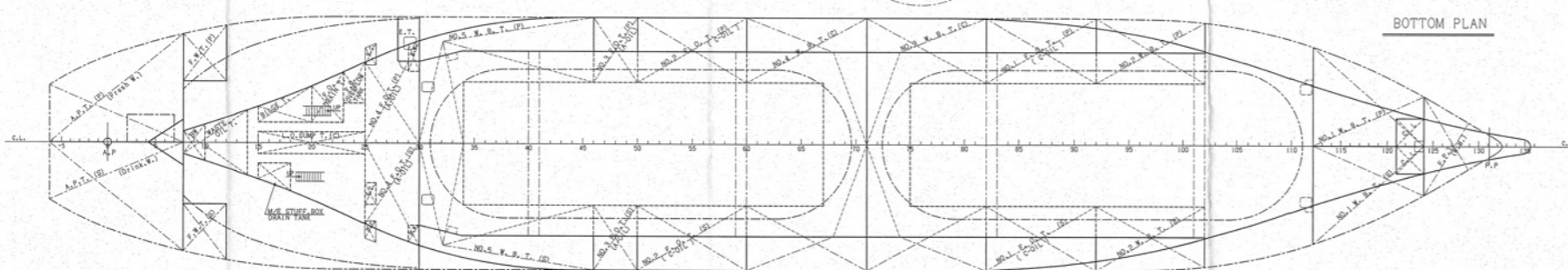
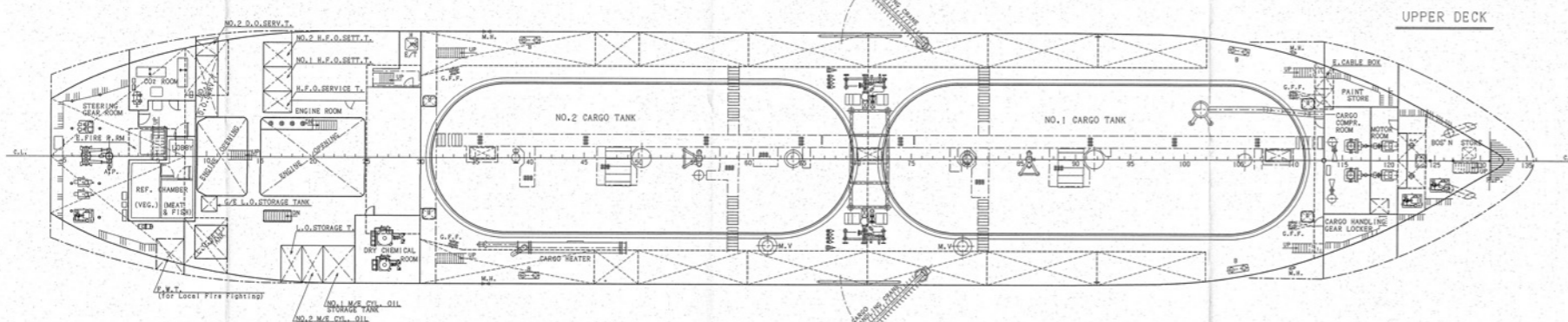
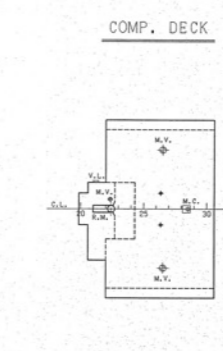
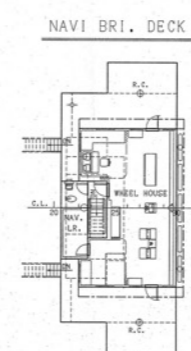
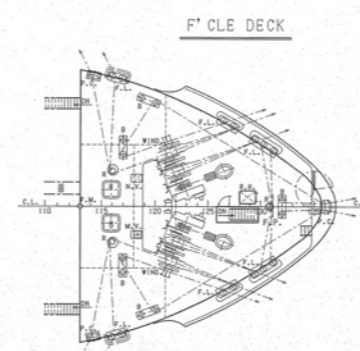
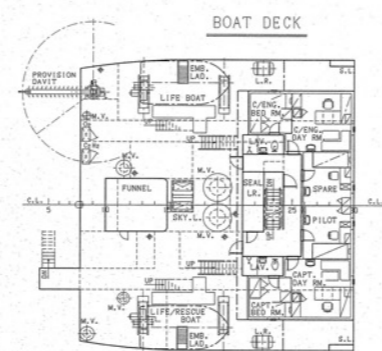
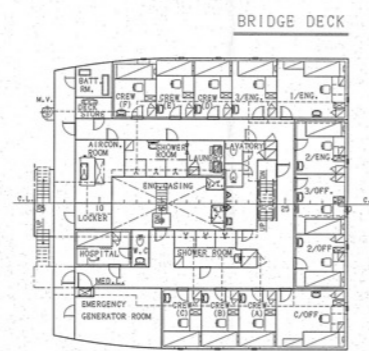
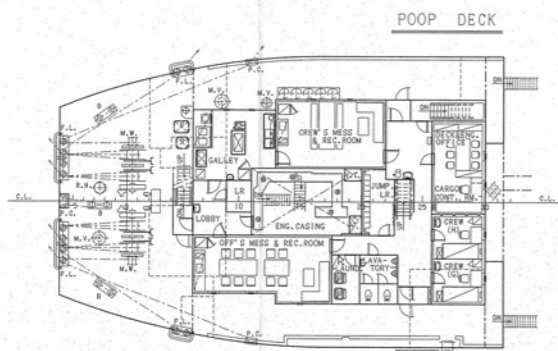
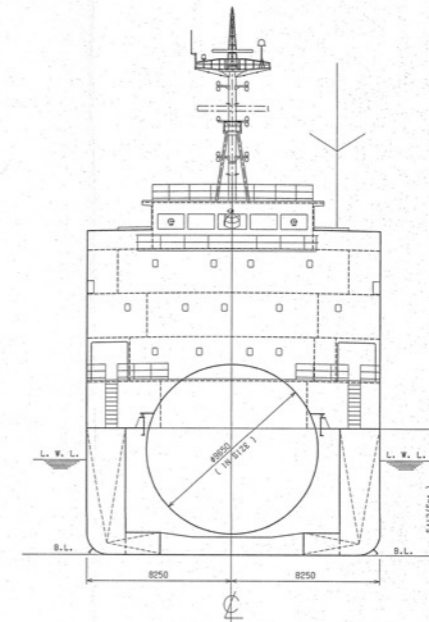
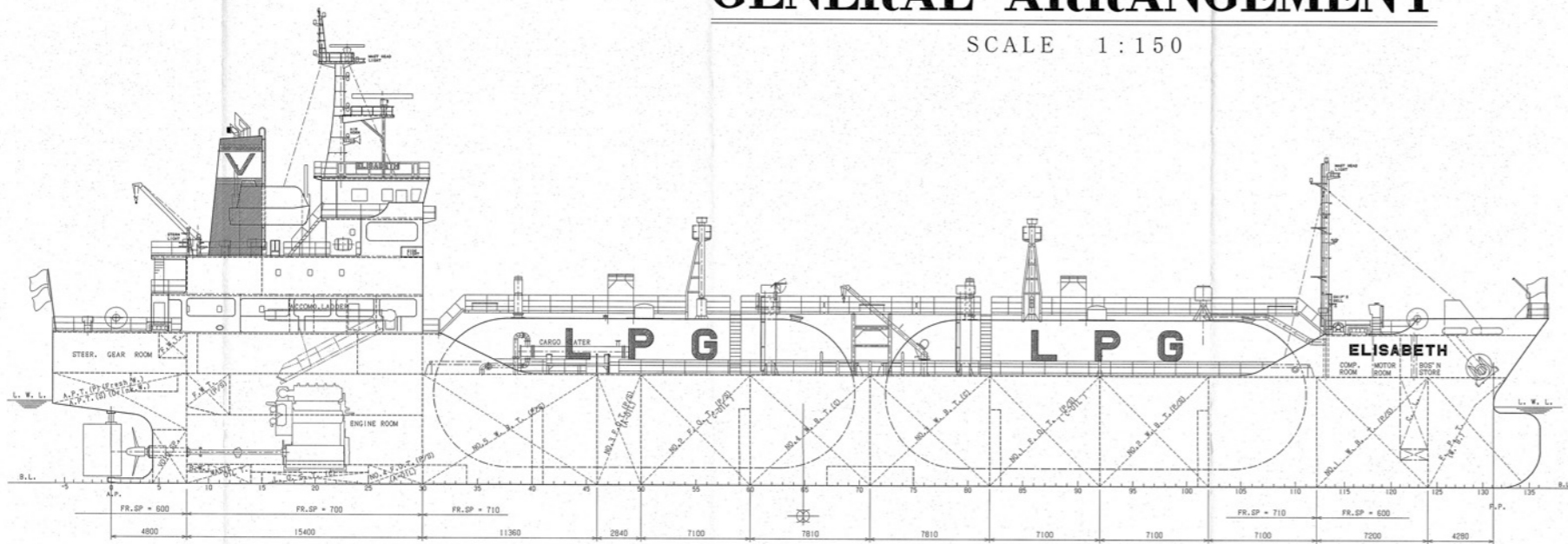


" M.V. ELISABETH "

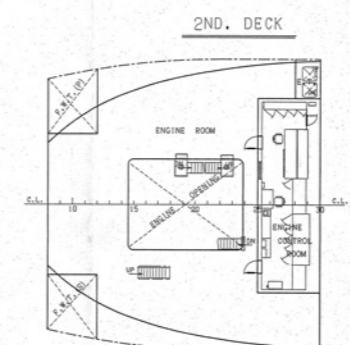
GENERAL ARRANGEMENT

SCALE 1:150



PRINCIPAL DIMENSIONS

LENGTH (O.A.)	97.236 m
LENGTH (P.P.)	89.90 m
BREADTH (MLD)	16.50 m
DEPTH	7.20 m
FULL LOAD DRAFT (SUMMER EXT.)	5.413 m
GROSS TONNAGE (INTERNATIONAL)	3493 T
DEADWEIGHT (SUMMER)	3989.77 T
TANK CAPACITY	3542.47 m ³
MAIN ENGINE	MAKITA-HITSUI-MAN B&W SL35MC-MARKS X I
M.C.O.	2700kW x 210min"
C.S.O. (90NM, C.O.)	2430kW x 203min"
SERVICE SPEED (90NM, C.O., 15%W.M.)	abt. 13.2 Kts
COMPLEMENT	19 P.
CLASSIFICATION	NK, NDC (Liquefied Gas Carrier Type 2PS), MNSZ (ND)
Descriptive Note : (Design maximum pressure 1.77MPa / minimum temperature -10 degree C)	
NAVIGATION AREA	OCEAN GOING



BIBLIOGRAPHY

19th December 2008
for FINISHED PLAN

MANAGER	SHIP NO.	DRAWING NO.	CLASS
ASS. MANAGER	1066	B-110	N K
DESK	3,500 CBM. PRESSURIZED LPG/VCM CARRIER		
ASS. DESK	GENERAL ARRANGEMENT FINISHED PLAN		
CHECKED	DATE 19th Dec. '08		
DATE	SCALE 1:150		

YAMANISHI CORPORATION